

# Bethany Catholic Primary School, Werribee



## Yr 1/2 - Discovery Centre News - Term 1, 2024

### Welcome to Term One 2024.....

What a wonderful start to Term 1. The students are so happy to be back at school after the holidays, reconnecting with their friends and eager to learn.

We have a wonderful buzz in the Discovery Centre.

We have a very exciting term ahead of us. We are sure the students are going to thoroughly enjoy the highly engaging learning and teaching within the Centre.

The children have met their new specialist teachers. The students participated in a variety of subjects such as Music, Physical Education, Art, Science and Digital Technologies/Robotics.

The children will continue to learn Italian with our Language Assistant Claudia and hub teachers.



### Bethany Day:

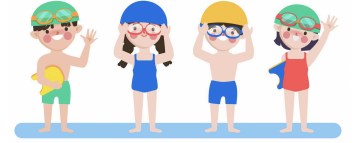
On Monday March 25, we will join together to celebrate Bethany Day. Students will work in cross age groupings across the school to participate in fun sporting activities run by Kaboom Sports.

Students are asked to wear their sports uniform on this day and a t-shirt the same colour as their athletic team. More information to follow.



## Swimming:

This term the students in the Discovery Centre will participate in a swimming program from **Monday 27th March – Friday 31st March**. Students will be participating in a school Aquatic Education and Water Safety Program conducted at Aquapulse indoor pool. This program adopts the Swim & Survive program. This comprehensive swimming and water safety program seeks to encourage the development of swimming and water safety skills of all children.



## Assemblies:

We look forward to gathering to share our learning at the upcoming assemblies. This is a wonderful opportunity for the students to lead the school in prayer, celebrate learning, as well as building community, student voice and agency. Students will sing the national anthem, receive awards and celebrate birthdays. The assemblies will be held every second Monday from 2:25-3pm.

The Discovery Centre students will lead the assemblies on the following dates:

Term 1: Monday March 18	Red and Orange Hubs- Year 1
Term 2: Monday May 6	Gold and Violet Hubs- Year 2
Monday June 3	Yellow and Green Hubs- Year 1
Term 3: Monday August 5	Indigo and Blue Hubs- Year 2

## PBL - Positive Behaviour for Learning

We continue to use our PBL expectations to support students in being **Safe, Respectful and Responsible**. Look out for our beautiful new signage we had installed over the holidays placed around our school. We appreciate your continued support with this.

## Positive Behaviour for Learning School Wide Expectations



*Let Learners Learn and Teachers Teach*

	Be Safe	Be Respectful	Be Responsible
Learning Spaces	<ul style="list-style-type: none"><li>Keep hands, feet and objects to yourself</li><li>Line up and walk calmly and quietly</li></ul>	<ul style="list-style-type: none"><li>Use kind words and actions</li><li>Use whole body listening</li><li>Follow directions promptly</li></ul>	<ul style="list-style-type: none"><li>Look after self, others and equipment</li><li>Be a responsible learner</li></ul>
Outside Area	<ul style="list-style-type: none"><li>Keep hands and feet to yourself</li><li>Use spaces and equipment correctly</li></ul>	<ul style="list-style-type: none"><li>Use kind words and actions</li><li>Be a good sport</li></ul>	<ul style="list-style-type: none"><li>Look after self, others and equipment</li><li>Wear correct uniform</li><li>Be on time &amp; walk promptly to line up</li></ul>

## Bethany Resource Centre

The students are able to borrow books from the Resource Centre. Please send along a cloth bag to use as a **library bag** for the children to place their borrowed books in.

The students in the Discovery Centre will attend the Resource Centre on the following days:

**Monday:** Violet, Blue, Indigo hubs

**Tuesday** Red, Green, Orange

**Friday:** Gold, Yellow



## Learning at Home (Homework)

Homework is sent home on a Tuesday and is to be returned on the following Monday.

Students will bring home their homework book and a decodable text.

For students in the Discovery Centre the time allocation is 15 minutes per night.



## Bethany- a Sun Smart School:

As part of the Sunsmart Policy, students need to wear a Bethany school hat during playtimes and outside sport/activities during February to May, and September to December. Please ensure all hats are clearly labelled. Bethany has a 'No Hat No Play' policy.



## Term 1 Learning and Teaching in the Discovery Centre...

In **Religious Education**, the students are focussing on the topics of Prayer and Lent:

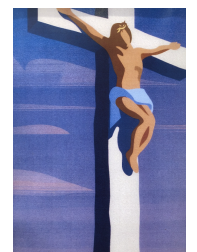
**Prayer-** Students will learn formal and informal prayers e.g. morning and afternoon prayers, grace before meals, making the sign of the cross and how to set up a prayer space. They will also learn the Our Father, Hail Mary.

In **Religious Education** the students are exploring the guiding faith questions of:

*How is Lent a gift of time to strengthen and deepen my relationship with God and others?*

*How can I demonstrate my understanding of the scriptures and the Church rituals of Holy Week in my daily life in the world of today?*

The students will identify the seasons of the liturgical calendar and describe what each colour means. Students will explore Holy Week and the story of Jesus praying in the Garden of Gethsemane.



## English Year 1

Students will focus on:

### Reading

#### **Phonics and word knowledge**

- recognise short vowels, common long vowels and consonant digraphs (ch,sh,th) and consonant blends(bl,cl,cr,gr etc)
- understand how to spell one and two syllable words with common letter patterns
- understand that a letter can represent more than one sound, and that a syllable must contain a vowel sound
- expand and clarify vocabulary presented in a text
- learn the etymology( origin) of words and how to use them
- answer comprehension questions related to texts.

### Writing

#### **Phonics and word knowledge**

- recognise and know how to use simple grammatical morphemes in word families
- understand how to use visual memory to write high-frequency words, and that some high-frequency words have regular and irregular spelling components
- identify and use sentences, questions, exclamations and commands and the relevant punctuation for each type of sentence.

### Speaking and Listening

Students will focus on:

- Listening to others when taking part in conversations and discussions using appropriate interaction skills, such as taking turns, focusing on the speaker.
- Asking good questions,
- Thinking and responding to a question using full sentences,
- Using appropriate social language use.

## English Year 2

Students will focus on:

### Reading

#### **Phonics and word knowledge**

- learn some generalisations for adding suffixes to words
- recognise most letter–sound matches including silent letters, trigraphs, vowel digraphs eg *ai,ay,ee,ea* and common long vowels, understand that a sound can be represented by various letter combinations
- learn the etymology of words and how to use them
- clarify vocabulary presented in a text
- reading with accuracy, rate and expression
- answer comprehension questions related to texts.

### Writing

#### **Phonics and word knowledge**

- understand how to use digraphs, long vowels, blends, silent letters and syllabification to spell simple words including compound words
- use visual memory to write high-frequency words and words where spelling is not predictable from the sounds
- identify and use sentences, questions, exclamations and commands and the relevant punctuation for each types of sentence.

### Speaking and Listening

Students will focus on:

- Listening to others when taking part in conversations and discussions using appropriate interaction skills, such as taking turns, focusing on the speaker.
- Asking good questions,
- Thinking and responding to a question using full sentences,
- Using appropriate social language.

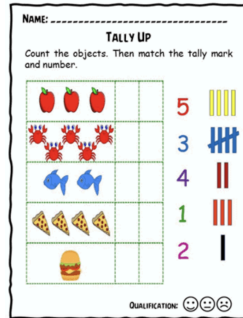
## Mathematics Year 1

**Throughout term 1, students will focus on:**

### Statistics

Students will

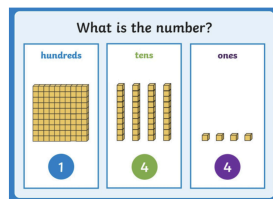
- collect data on categories of similar items and record the findings using tally marks
- read that data to show their understanding of what the data represents e.g. most, similar and least popular category.



### Number - Counting & Place Value

Students will

- recognise, represent and order numbers to at least 120 using physical and virtual materials
- partition two digit numbers using physical and virtual materials
- quantify groups collections by partitioning into equal groups using number knowledge and skip counting.



### Number - Addition & Subtraction

Students will

- use mathematical modelling to solve addition problems using physical and virtual materials
- use calculation strategies to solve the problem .

## Mathematics Year 2

**Throughout term 1, students will focus on:**

### Number

Students will

- recognise, represent and order numbers to at least 1,000 using physical and virtual materials, numerals and number lines
- partition, rearrange, regroup and rename two and three digit numbers e.g. hundreds, tens, ones
- recognise the role of the zero digit in place value notation.

Thousands	Hundreds	Tens	Units/Ones
Cube  1000	Flat  100	Rod  10	Unit  1

### Measurement- Time

Students will

- identify the date and determine the number of days between events using calendars, months, weeks, days
- recognise and read the time represented on an analogue clock to the hour, half-hour and quarter hour
- identify, describe and demonstrate quarter, half, three-quarter and full measures of turn in everyday situations.



### Number- Addition & Subtraction

Students will

- partition (split), rearrange, regroup and rename two and three digit numbers using standard and non-standard groupings
- recognise the role of a zero digit in place value notation
- add & subtract one- and two- digit numbers
- represent problems using number sentences and solve them using mathematical calculation strategies.

## Inquiry

In our Inquiry unit this term the students will be exploring the question:



### **Community** **What makes a community successful?**

Students will develop an understanding of community, its people and the different groups they belong to. They will develop an understanding of values such as equality, safety, respect, responsibility and inclusion.

Students will answer the following key inquiry questions:

- What is a community?
- Who makes up our community?
- What are my rights and responsibilities?
- What are the rights and responsibilities of others in the community?
- What makes a successful community?
- How do I help my community?

## **Parlo Italiano (I Speak Italian) with Claudia Pesolilla**



Bentornati ragazzi e ragazze! (Welcome back boys and girls!).

Students in **Year 1** will continue to learn new phrases to introduce themselves by asking each other "Come ti chiami?" (What's your name?) and responding. Students in **Year 2** will have the opportunity to construct complex sentences. They will explore sentence structures using different types of verbs (based on the person doing the action) and adjectives.

All students will revise previous words and phrases at the beginning of each lesson, as a daily review to consolidate their understanding. Towards the middle of the term Easter words will be introduced.

Students are encouraged to practise the language daily and to speak to each other in Italian as often as possible throughout the day. Italian slides, interactive games and songs will be used daily to reinforce the Italian language.

Arrivederci.



## **PE**

Students in Year 1 will continue to improve their fundamental motor skills through a variety of skill based activities and the Year 2 students will have an opportunity to advance and fine tune their skills by participating in a variety of minor games. All students will be provided with opportunities to enhance their skills on how to be a team player. This includes winning and losing, respecting their peers, fair play and following instructions. The students will also be preparing for the Bethany Athletics Carnival (early in Term 2) by practising skills such as, the 100 metres, long jump and shot put.



## Specialists Programs for Term 1

We begin our first cycle of Specialist opportunities in 2024.

Visual Art	Visual Art	Digital Technologies	Digital Technologies	Music	Music	Science	PE
Red/ Green	Indigo/ Blue	Gold/ Violet	Orange/ Yellow	Violet/ Gold	Yellow/ Orange	Green/ Red	Blue/ Indigo

### Physical Education -with Veronica Spencer

The students from **Blue** and **Indigo** hubs will be improving their teamwork skills with a focus on how to be a leader and a team player, winning and losing, respecting their peers, fair play and following instructions. In these lessons, students will be participating in team games and have the opportunity to learn leadership skills.



### Music - with Trish Hollenbach

Students in **Violet** and **Gold** hubs will be singing, playing instruments and musical games. They will also be listening to a wide range of music and musical story books in music to help consolidate their understanding of Musical terms and notation. They are singing and playing songs that demonstrate that music can be loud or soft (dynamics), that notes can be high and low (pitch) and that we can play fast and slow (tempo). Students will progress from untuned percussion instruments such as drums and claves to tuned percussion instruments like hand bells which will introduce them to the concept of reading musical notes.



### Music with Hayley Fenech

Students in **Orange** and **Yellow** hubs will enjoy building on their skills in singing and body percussion, playing along to a range of different songs. They will each have opportunities to practise with a variety of percussion instruments, including maracas, symbols and bells. These experiences will continue to develop their musical appreciation and knowledge, particularly with the concepts of Beat, Rhythm and Tempo.



### Visual Art with Natalie Newman

In Visual Arts **Green** and **Red** hub students will develop their understanding of the art elements line and shape by looking at the work of Paul Klee and Mary Blair. Students will learn about native plants and animals by creating collage artworks using their own patterned printed papers. Students will continue to deepen their understanding of shape, line and colour in creating a 'my family' collage artwork using drawing and fabric collage making skills.



### Visual Art with Jo Allison

After exploring various ways to manipulate paper and cards to create various forms, students from **Indigo** and **Blue** hubs will create their own paper sculptures. Students will learn how to curl, tear, roll and fold coloured paper in order to enhance the aesthetic value of their sculptures.



### Science- with Natasha D'Cunha

In Science, students in **Green** and **Red** hubs will be focusing on the different everyday materials that we use in our world. We will look at how these materials can be manipulated to change their form. We will look at what makes certain items weak and strong. Students will observe and record the different properties of these items.



### Digital Technology/Robotics - with Ash Hudson

This term students in **Gold** and **Violet** hubs will begin their block coding journey using ScratchJr. Students will become familiar with the ScratchJr software before linking programming blocks to make characters move, jump, dance and sing on a stage. Students will progress to programming simple interactive stories which they will share with a small group.





### Digital Technology/Robotics - with Kate Hockley

This term in Digital Technologies, the students in **Orange** and **Yellow** hubs will use the Bluebot robots (operated via an app and bluetooth) to further develop their understanding of positional language and computation skills (thinking like a computer). The unit will include weekly hands-on opportunities for students to program their robot to perform specific tasks. Students will enjoy coding their Bluebot, alongside a peer, to complete obstacle courses, collect small objects and make art with a drawing attachment.



### School Timetable

8:30 am	School gate opens
8:45am	First bell rings and the students line up and enter their hub
8:50am	Second and <b>final</b> bell. Students arriving after this time must go to the office to sign in and get a <b>late pass</b>
8:50 - 11am	Learning block 1
11am- 11:30pm	First break
11:30 - 11:50am	Eating time
11:50 - 1:30pm	Learning block 2
1:30pm - 2pm	Second break
2pm - 2:10pm	Eating time
2:10 pm - 3pm	Learning block 3
3pm	End of school day

---

Please do not hesitate to call or email for anything you need.

**Educators**

**Year 1**

Inya Wallace (Yellow Hub) [inya.wallace@bswerribeenth.catholic.edu.au](mailto:inya.wallace@bswerribeenth.catholic.edu.au)

Amanda Defina (Yellow Hub) [amanda.defina@bswerribeenth.catholic.edu.au](mailto:amanda.defina@bswerribeenth.catholic.edu.au)

Demi Barwood (Orange Hub) [demi.barwood@bswerribeenth.catholic.edu.au](mailto:demi.barwood@bswerribeenth.catholic.edu.au)

Emily Wilson - Navaro (Red Hub) [emily.navaro@bswerribeenth.catholic.edu.au](mailto:emily.navaro@bswerribeenth.catholic.edu.au)

Jocelle Cachero (Green Hub) [jocelle.cachero@bswerribeenth.catholic.edu.au](mailto:jocelle.cachero@bswerribeenth.catholic.edu.au)

**Year 2**

Maree Day (Indigo Hub) [maree.day@bswerribeenth.catholic.edu.au](mailto:maree.day@bswerribeenth.catholic.edu.au)

Hayley Fenech (Indigo Hub) [hayley.fenech@bswerribeenth.catholic.edu.au](mailto:hayley.fenech@bswerribeenth.catholic.edu.au)

Cassie Hockley (Blue Hub) [cassandra.hockley@bswerribeenth.catholic.edu.au](mailto:cassandra.hockley@bswerribeenth.catholic.edu.au)

Clare Barwood (Violet Hub) [clare.barwood@bswerribeenth.catholic.edu.au](mailto:clare.barwood@bswerribeenth.catholic.edu.au)

Kristy Varenica (Gold Hub) [kristy.varenica@bswerribeenth.catholic.edu.au](mailto:kristy.varenica@bswerribeenth.catholic.edu.au)

Hayley Fenech (Gold Hub) [kristy.varenica@bswerribeenth.catholic.edu.au](mailto:kristy.varenica@bswerribeenth.catholic.edu.au)

[hayley.fenech@bswerribeenth.catholic.edu.au](mailto:hayley.fenech@bswerribeenth.catholic.edu.au)

**Centre Leaders:**

Amanda Defina [amanda.defina@bswerribeenth.catholic.edu.au](mailto:amanda.defina@bswerribeenth.catholic.edu.au)

Kate Flanders [katrina.flanders@bswerribeenth.catholic.edu.au](mailto:katrina.flanders@bswerribeenth.catholic.edu.au)